





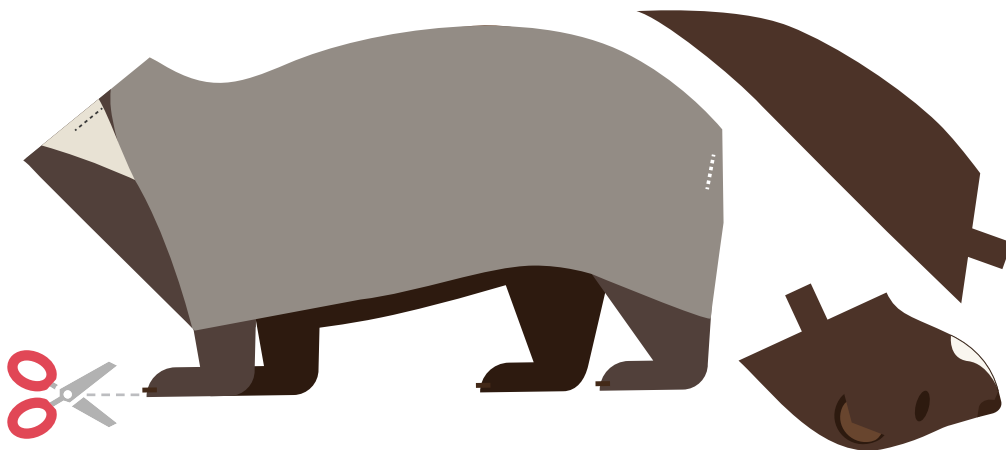
Whose tail is this?

All the members of the Mustelidae family resemble each other in build, colouring or behaviour. Mustelids have elongated bodies and short legs, and the difference in size between the smallest and largest mustelid species is noticeable. We tried to make it more difficult by matching the size of all the species.

-  **Would you be able to set all the parts back together?**
-  **Can you create a new mustelid by assembling parts from different mustelids?**

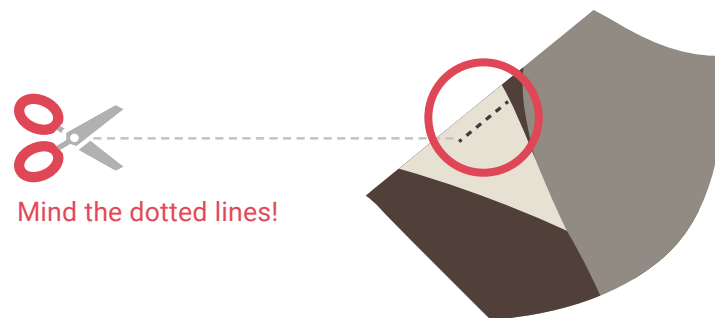
Instructions

1. Print and cut out the figures that appear in the following pages.



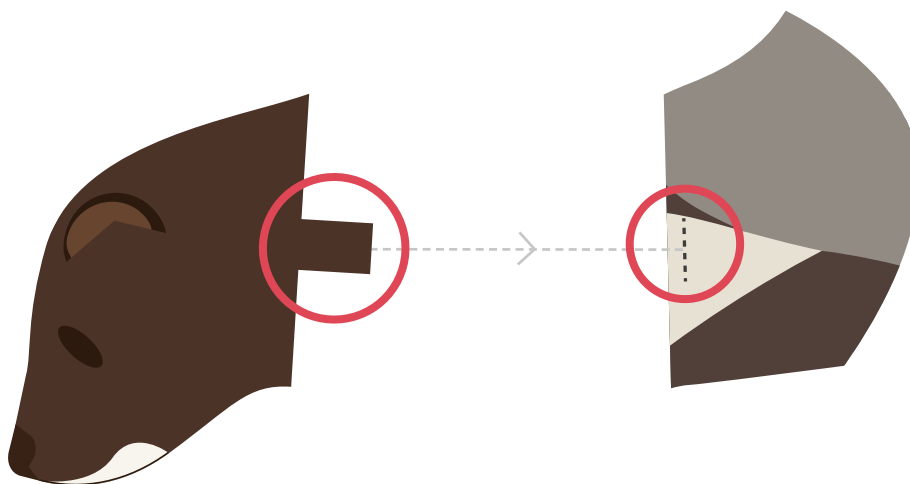
Follow the edges!

2. Each head, body and tail belong to a specific mustelid.



Mind the dotted lines!

3. Make a small and straight cut following the dotted line. This will help assemble the pieces.



4. Don't remove the tab in the head and tail parts. You will need the tabs to join the head and the tail with the body. Introduce the tab through the previous cut.

Ready? Print the following pages and have fun!



GET YOUR PAWS DIRTY



